

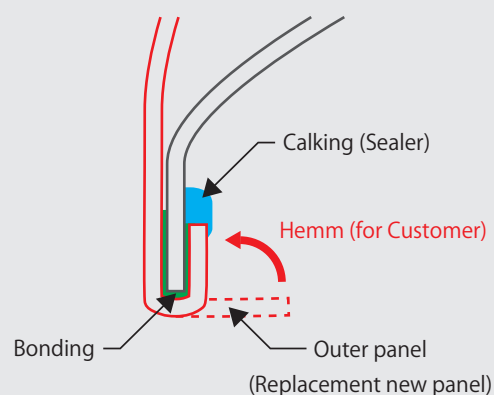
NEXT

Replacement of the “New Quarter Panel” of Japanese cars.

What about you?

New Quarter Panel Details

Hemming processing of 0.6 mm thin plate steel.
(example. TOYOTA PRIUS)



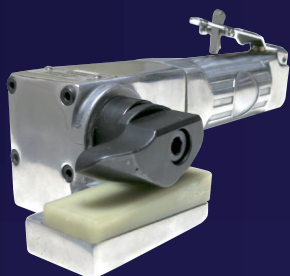
Do you hem a panel with a hammer & dolly?
..... Is the panel beautiful?



Do you remove a panel with a sander?
..... Does it take a long time?

Of course I use the

NEX-1000DS
ヘミングツール



NEX-2000DS
リムーバルツール



Hemming Tool

Removal Tool

produced by NEXT CO., LTD

Hemming Tool



Cut the work time by 81%.

(Hammer & Dolly - 18:18 vs Hemming Tool - 3:22)



Adjust the panel thickness.
(1~3mm)



Working with a hammer & dolly
will cause more damage.

◆ NEX-1000DS

Size : W280×L140×H90mm
Weight : 1,700g
Corresponding thickness : 1 - 3mm
Air consumption : 142L/min
Air pressure : 0.62MPa
Sound power : 96db(A)



Removal Tool



"Removable Plier"
(included)

Cut the work time by 90%.

(Sander - 0:27 vs Removal Tool - 4:55)



It's so powerful that you can
easily remove a hard panel.



◆ NEX-2000DS

Size : W280×L127×H127mm
Weight : 1,400g
Air consumption : 142L/min
Air pressure : 0.62MPa
Sound power : 96db(A)



Rubber Dolly

<p>ND-1</p>  <p>Rubber Dolly 1 L118×W58×H35mm Weight : 690g</p>	<p>ND-2</p>  <p>Rubber Dolly 2 L63×W76×H39mm Weight : 410g</p>	<p>ND-3</p>  <p>Rubber Dolly 3 L121×W72×H37mm Weight : 700g</p>	<p>ND-4</p>  <p>Rubber Dolly 4 L70×W67×H78mm Weight : 725g</p>
<p>ND-5</p>  <p>Rubber Dolly 5 L73×W77×H70mm Weight : 695g</p>	<p>ND-6</p>  <p>Rubber Dolly 6 L135×W63×H50mm Weight : 745g</p>	<p>ND-7</p>  <p>Rubber Dolly 7 L95×W65×H33mm Weight : 460g</p>	<p>ND-8</p>  <p>Rubber Dolly 8 L118×W58×H35mm Weight : 685g</p>

*Specifications and contents described in the catalog is subject to change without notice.